

Church Opens 'Back Door' to Youth

EAU GALLIE — A dream comes true Saturday night when "The Back Door" opens. "The Back Door" is the name of a youth Coffee House located in the old ball room of the Imperial Hotel at the causeway.

The Coffee House is a division of a non-profit, non-denominational corporation known as "Christian Enterprises, Inc." Another division is the Brevard Counseling Center, located in the same building.

Larry Jones, local businessman, is director of the Coffee House. Jamie Buckingham, pastor of the Baptist Tabernacle who holds a graduate degree in Psychology and Pastoral Counseling, is director of the Counseling Center.

Support for the corporation is coming from local churches, business firms, civic clubs and interested local businessmen. The Baptist Tabernacle is contributing regularly to the work of the corporation as well as helping furnish workers in the Coffee House.

Primary aim of the Coffee House is to bring teenagers into a definite and personal relationship with God and encourage them to attend the church of their preference on a regular basis. Side benefits are a planned recreation program, social activities, and scheduled

appointments through the counseling center."

The Coffee House will open Saturday night at 7:30 and will remain open until 11:30. Entertainment will be provided throughout the evening by Pam Rose and "The Fore," a local folk singing group composed of teenagers.

The Coffee House will be open each afternoon after school and structured programs will be planned throughout the week. These will involve the use of films, dialogue, forums, discussion groups. Supervised classes in sex-education, career planning, parent-child relations, and social problems will be held at periodic times.

Various local pastors and youth workers will be invited to lead and participate in various programs in the future. Outside entertainment and inspirational speakers will be invited in at different times.

The program for the Saturday night activities at the Coffee House will be varied. Strob lights, poetry readings, drama and impressionist painting will make up some of the programs.

The Counseling Center will be open throughout the day on an appointment basis, specializing in marriage counseling.

Rev. Buckingham:

"Many of the youth of South

Brevard are beset with serious emotional and psychological problems. These problems stem from the society in which they live. Broken homes, improper sex adjustment, low morals, pressure from home to excel and from other teenagers to conform to mediocrity . . . all these press in upon today's teenager. The Coffee House will provide a place where they can come for good clean fun as well as a planned program. The Counseling Center will give them access to a trained counselor to discuss various personal and spiritual problems."

"There's no such thing as a 'bad kid'. Children are made bad by the homes and the society in which they live. I hope to provide an atmosphere that will help them in growing up — and will help them in their home and social problems."

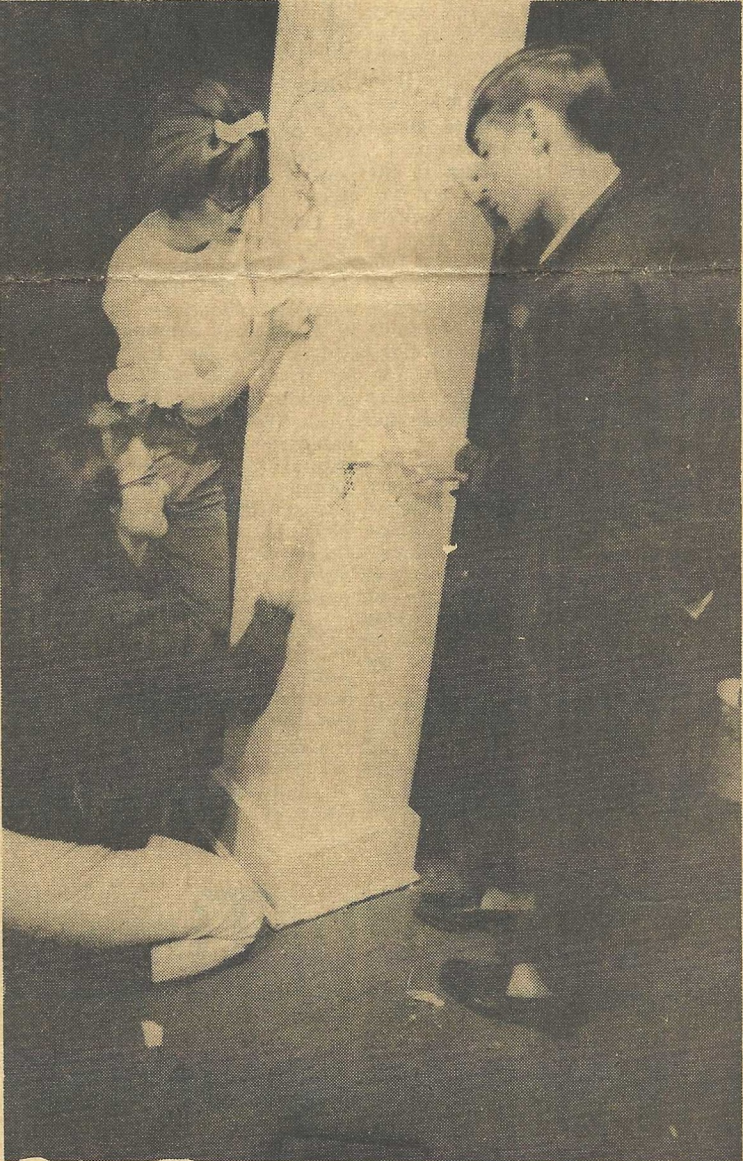
"Today's teenager is no different from the teenager of the last generation. But circumstances have changed. And if you are going to reach them, you have to reach them on their own turf. The day is past when you can build a church building and say "everyone come". Teenagers today are looking at the institutional church with a skeptical eye. They see it lagging behind society. They see it full of hypocrites. They see it con-

demning not only the sin — but the sinner. What we're trying to do is reach teenagers where they are . . . and let them know that the Gospel of Christ is still as relevant today as it was when it was preached to us."

"The idea of having a counseling center in conjunction with a youth coffee house is unique. Yet, why should all counseling be limited to adults. Teenagers have problems, too. Their biggest problem is that they don't have anyone to talk to. Locating the Counseling Center in the same building with the Coffee House will give the teenager a place for confident, intimate consultation with sympathetic, Christian counselors."

"We want to emphasize that although the people at the Baptist Tabernacle have supported this project, that Christian Enterprises, Inc., is a non-denominational corporation. Our ministry through the Coffee House and the Counseling Center is one that is completely non-denominational."

"The work at the Counseling Center is not limited to teenagers. We look forward to a rewarding work with parents as well, and to cross referrals with the local courts, schools, and medical authorities."



PSYCHEDELIC ART — Painting the new “Back Door” Coffee House for teens at the former Imperial Hotel in Eau Gallie are Marti and Kathy Watson and Bill Eubanks.

(Times Photos by Bernd)

1966?



THE FORE — Bob Shupe, Nancy Lipke, Tim Perdue and Pam Rose practice for the Saturday night premier of the Back Door, new teen Coffee House in Eau Gallie.



LIGHTS PLUS — Jimmy Atkinson shows one of his paintings to Back Door Director Larry Jones as the two preview the "Lights Plus" slide show scheduled for opening night Saturday.